



[www.dawoolppt.com](http://www.dawoolppt.com)

DAWOOL PPT provides the highest quality technical service with professional experience and excellent technicians.



**2023**  
[www.dawoolppt.com](http://www.dawoolppt.com)



## CONTACT US

**ADDRESS :** 191, Techno Valley 1-ro, Jinrye-myeon,  
Gimhae-si, Gyeongsangnam-do

**TEL / FAX :** +82-55-326-0913 / +82-51-980-5343

**E-MAIL :** dawoolppt@dawoolppt.com

**WEB :** www.dawoolppt.com

# COMPANY INTRODUCTION

# DAWOOL PPT

**We will do our best to make your company grow further and become a global company.**

Dawool PPT is a Total Production Solution Company in the fields of plant, shipbuilding, steelmaking, steel structure, and pipe and piping manufacturing. We strive to provide the best service to our customers with the motto of Faith, Challenge, Passion, and Jump.

# We will be the best partner

for your business growth based on accumulated technology and rich experience.

Table of

## CONTENTS

GREETINGS	04
HISTORY	05
ABOUT US	06
MANAGEMENT STRATEGY	07
BUSINESS AREA	08
TECHNOLOGY RETENTION	14
CERTIFICATES	22
AFTER SALES SERVICE	23



Message from

# GREETINGS

## Dawool PPT will build your Future Together!

Each enterprise in a rapidly changing environment, companies are trying to improve their competitiveness constantly. A productivity improvement of products that form the basis, and can be referred to as the production technology itself is the competitiveness of enterprises.

We are total engineering service company for welding automation systems in manufacturing fields such as plant, shipbuilding, marine and semi conductor. We established on configuring competency experts who has committed to the development of the industry in their respective fields that our core competency is a talent securing the technology and its capability of our company will immediately become your competitive edge.

We will do our best effort to strengthen our customers' competitiveness as a top priority so that it can be grown as a reliable company for the global age.

Thank you.  
From DAWOOL PPT Co., Ltd.

Company overview

# MISION & VISION

DAWOOL PPT Co., Ltd. aims to secure a lot of experience and competency in the fields of welding automation in heavy industry, shipbuilding, offshore and onshore plants under the motto of faith, challenge, passion, and leap, and to secure competitiveness in this field by uniting the organization.

### MISSION. CLIENT SATISFACTION

To effectively and efficiently manage our customers need in our business fields by offering the highest standards in service, reliability, safety and cost containment in our fields.

### VISION. WORLD BEST WITH CLIENT

To be the world leader in bringing our customers innovative products, services and solutions that add value and exceed their expectation.

Our History

# HISTORY

- 18.09.05 - Established DAWOOL PPT Co., Ltd.  
(Capital: KRW 100 million)
- 19.01.04 - Corporate affiliated research institute
- 19.10.01 - Hyundai Engineering Technology  
Contest Award
- 19.05.01 - Relocation of headquarters (Gimhae,  
Gyeongsangnam-do)
- 20.03.18 - Women's Enterprise Certification
- 20.07.21 - Confirmed as a company specializing  
in material parts equipment
- 20.08.04 - Venture company certification
- 21.06.23 - Excellent company for reinforcing  
job inventions
- 21.07.01 - Export Promising SMEs
- 21.10.28 - Best start-up package company
- 21.10.28 - Offshore Startup Excellence Award
- 21.11.09 - Technologically innovative SMEs
- 21.12.30 - Software provider
- 22.02.17 - Professional research business
- 22.03.04 - Membership card
- 22.06.17 - Investment attraction, capital increase  
(KRW 138 million)
- 22.08.02 - Selected as a cooperative company
- 22.08.16 - Root company confirmation

About us

# COMPANY

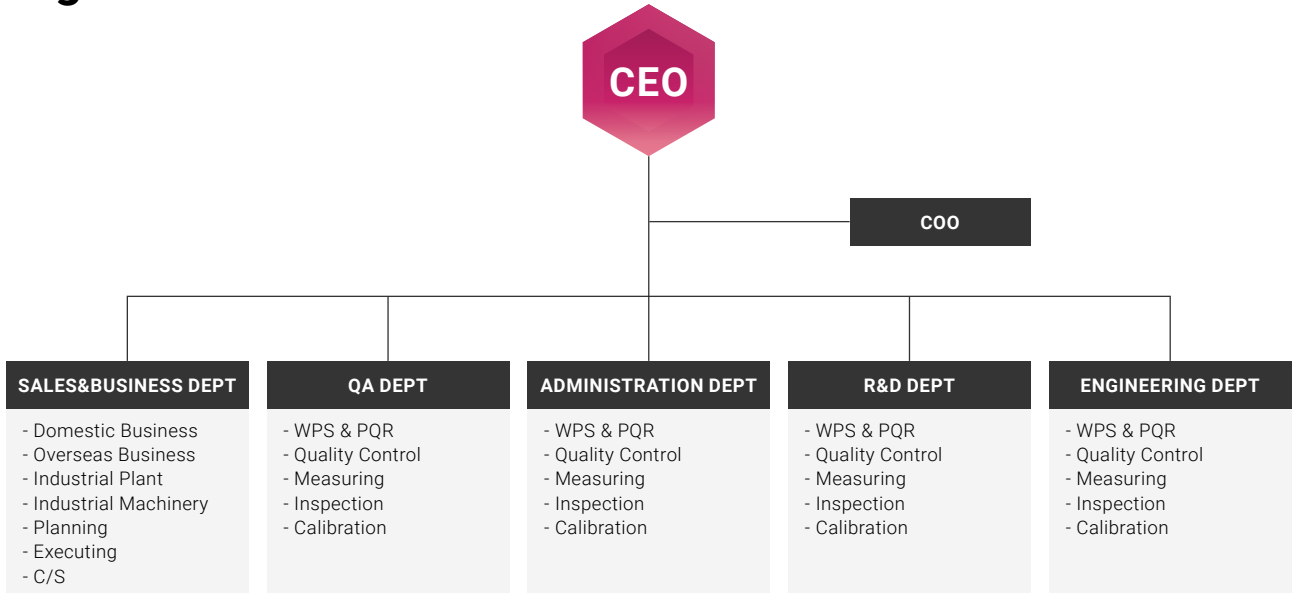


"The manufacturing industry, which has grown based on quantitative growth, is facing its limits."  
"The core competency of the manufacturing industry is technological competitiveness, and in order to secure it, all capabilities of related industries must be mobilized."

Plant and offshore construction technologies are still in the secondary industrial era. Accordingly, our company intends to conduct business with the goal of securing competitiveness in this field by gathering members and organizations that have secured a lot of experience and capabilities in the field of welding automation for heavy industry, shipbuilding, offshore and land plants.

In the domestic and international construction market, there are many cases in which construction technologies from decades ago are utilized as they are. The reason is that it is difficult to secure a steady supply, making it difficult to operate a fixed organization and difficult to invest in new technologies. As a result, overseas competitiveness is gradually declining, and the competitiveness of winning orders from overseas is also declining. Accordingly, we intend to strengthen corporate competitiveness and expand our market competitiveness by grafting an automatic welding system that anyone can use without difficulty into the market.

## Organization




Management strategy

# ACTION PLAN


## The Greatest Construction Value Creator

We aim to grow into an Auto Welding Engineering Company with a value of 500 billion dollars in the Western market and 2 billion dollars in the domestic market by strengthening marketing capabilities, strengthening business performance competitiveness, continuously expanding new growth engines, and deepening stable management.



**PRODUCT DEVELOPMENT & COMPETITIVENESS REINFORCEMENT**

- Pipe Auto Fabrication
- Pipe Auto Field Installation
- Auto Cutting, Machining System
- Auto Fit-up, Welding System
- Eco Friendly Welding
- High Intellegent Welding
- High Performance Welding
- High Safeness



**SUCCESSFUL CONSTRUCTION [RESPONSIBLE CONSTRUCTION]**

- Establishment of successful construction strategy for each site
- Strengthening on-site support function
- Reinforcing on-site organizational capabilities
- Execution cost management



**REINFORCING MARKETING CAPABILITIES**

- Prior identification of related construction information
- Early establishment of bidding promotion PJT proposal strategy
- Efforts to secure and improve database to strengthen planning and analysis capabilities



**CREATING INTEGRATED SYNERGIES**

- Joint utilization of professional manpower and organizations
- Joint business and implementation in related fields
- Reestablishment of cost management system
- Improve construction productivity & Efficient operation of direct manpower



**BUILDING A NEW GROWTH ENGINE**

- Diversification of domestic and overseas markets
- Entry into the high-quality welding market
- Establishment of total service system in welding field
- Securing continuous markets such as education business



# BUSINESS AREA

You can see detailed plans for each sector. The current market status, promotion direction, and expected growth direction are also explained. Through this, the direction of the company can be clarified and prepared for an irregular future in advance.

## INDUSTRIAL MACHINERY

Machining Machinery / Crane / Transportation System / Shipbuilding Machinery/  
Pipe Mill Machinery / Robot Welding System

## INDUSTRIAL PLANT

Pipe Shop Fabrication / Field Piping & Pipeline Installation /  
Storage Tank Auto Welding / Other Pipe Auto Welding



Business area

# INDUSTRIAL MACHINERY

## OPERATION PLAN

Current market status	Promotion direction	Note
<ul style="list-style-type: none"><li>- Low investment atmosphere for large corporations due to the domestic economic downturn</li><li>- Decreased profitability of small and medium-sized enterprises</li><li>- Weakening of expertise and stagnation of related technology development</li><li>- Increasing demand for automation due to higher wages and reduced working hours</li><li>- Increased replacement demand for investment in the 2000s</li><li>- Decreased number of skilled workers due to aging</li></ul>	<ul style="list-style-type: none"><li>- Securing demand for alternative facility investment by strengthening sales for existing affiliates</li><li>- Reinforcing expertise according to increasing demand for automation and securing the market for large and medium-sized companies</li><li>- Creation of a common market by strengthening cooperation with other organizations</li><li>- Overseas market development</li></ul>	<p>We have developed and applied technology during the heyday of the domestic heavy industry sector, and based on this, we have increased the automation rate to establish a foundation for securing domestic and overseas markets.</p>

01. IMI (International Maritime Industries) Panel Robot Welding System 2 Sets promotion negotiations underway. As a new shipyard construction project in Saudi Arabia, GEC is the only domestic company to perform Panel Robot System (manufacture and supply 3 units)
02. IMI Piping Shop automation negotiations underway
03. (Major company, Design Department, Design Production Department, Preceding Design Department, Skipper Department) Discussing large-scale pipe production and installation facility investment
04. Utilizing domestic and overseas sales organizations of major company in the field of industrial machinery and piping automation
05. There are many similarities with the field of plant pipe production and installation, including joint technology development and applied logistics



### Machining Machinery

Panel Butt Welding System / Stiffener Fit-up System / Stiffener Multi-poleWelding System / T-Bar Fabrication Line



### Crane

Overhead Magnet Crane / Hook Crane / Container Crane / Jib Crane



### Transportation System

Shipbuilding Block Transportation / Engine Block Transportation / Pressure Vessel Transportation



### Shipbuilding Machinery

Panel Butt Welding System / Stiffener Fit-up System / Stiffener Multi-poleWelding System / T-Bar Fabrication Line



### Pipe Mill Machinery

Plate Milling Machine / Tack Welding Machine / Inside Welding System / OutsideWelding System



### Robot Welding System

Panel Robot Welding System / Small Assembly Robot Welding / Excavator Robot Welding System





Business area

# INDUSTRIAL PLANT

## OPERATION PLAN

	Current market status	Promotion direction	Note
EPC Company	<div><div>- Executive director of technology development organization, focused on air quality management</div><div>- Weak will to introduce new technology</div><div>- External competitiveness continues to deteriorate</div></div>	<div><div>- Establishment of new construction methods and techniques and securing reliability</div><div>- Approach and persuasion based on economic feasibility</div></div>	For some EPC companies to secure economic feasibility Forming an atmosphere for introducing new technologies
Constructor	<div><div>- No consistency in construction organization</div><div>- Stingy in investment, low technology and small business</div></div>	<div><div>- Suggest a more competitive method and implementation plan than the existing manual unit price</div><div>- It is necessary to set a plan in a direction that does not significantly change the existing composition</div></div>	The direction of supplying only equipment is contrary to the habits of the constructor, and core part grouping is required

01. Major company are active in introducing new technologies
02. There are many differences in quality and productivity depending on the automatic welding operation plan and operator skill, so it is necessary to continuously operate a specialized organization
03. Operation of test bed to secure on-site development technology



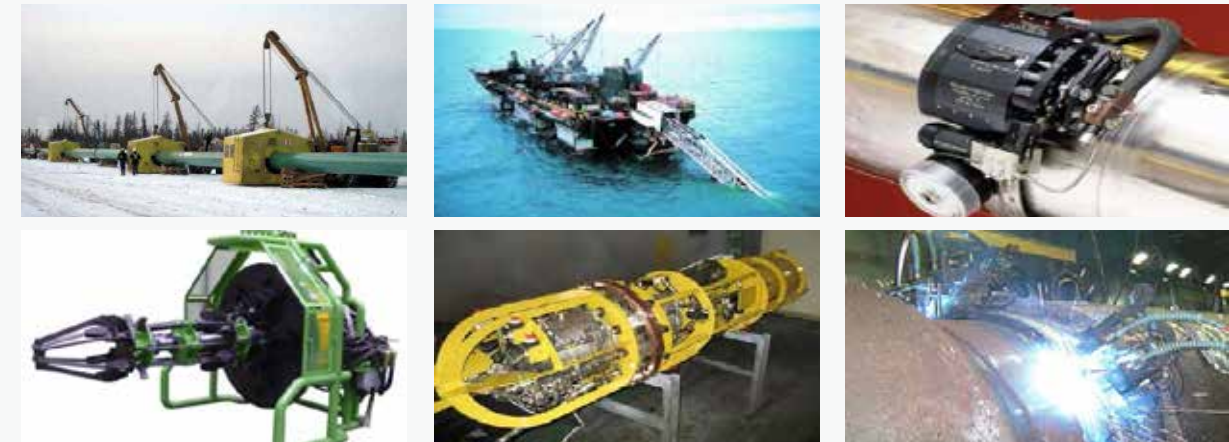
### Pipe Shop Fabrication

Piping Shop Lay-out Design / Cutting&Machining Equipment / Pipe Auto Welding System / Auto Welding Subcontracting / Supervision, WPS&PQR



### Field Piping & Pipeline Installation

Onshore Pipeline Auto Welding / Offshore Pipeline Auto Welding / Pipe Facing Machine / Process Piping Auto Welding(Carbon, Stainless, Alloy Steel) / Pipe Internal Line-up Clamp / Orbital FCAW Welding System / Orbital GMAW Welding System / Supervision,WPS&PQR



### Storage Tank Auto Welding

Horizontal Girth Welding System / VerticalWelding System / SAW Tiny Twin Welding System / Ni SteelWelding System / Supervision, WPS&PQR



### Other Pipe Auto Welding

Jetty Piping Auto Welding / Double&Triple Joint Auto Welding / Large Bore Water Supply Line / Pressure Vessel Longi. Welding / Pressure Vessel Girth Welding / Clad Welding System / Narrow Groove Welding System / Supervision, WPS&PQR





# DAWOOL PPT Technology Retention

The main use of each technology holding status, current working methods, domestic and foreign competitors, current sales status, future development plans, application areas, and features of our products are explained in detail.



Core technology status

TECHNOLOGY RETENTION

Securing homogeneous welding quality, high productivity (3-4 times compared to manual operation), labor cost reduction, stability improvement and noise and dust reduction, productivity improvement and economical construction

ORBITAL GTAW



Item	Contents	Note
Main use	- Steel & Non-Steel	
How it works	- Non-Skilled Welder	- Limited future supply and demand due to skilled welders, aging population, and high wages
Domestic and foreign competitors	- There are many overseas prophets, but the introduction cost is high - No domestic competitors	- Productivity effect is not high compared to manual welding
Current sales status	- Major company is under discussion on the application of the design and production department - After applying the test in the first half of 2024, plan to expand from the second half	- Proceed with countermeasures according to the decrease in highly skilled workers and the increase in defect rate
Future development planning	- Development of small-diameter orbital equipment (4" or less) - Strengthening expertise by target product - Development of high-efficiency techniques	
Application performance	- Shipbuilding, offshore plant, piping field - Onshore plant (refinery, chemical, power generation) piping field - Medicine, food, semiconductor piping field	

ORBITAL FCAW



Item	Contents	Note
Main use	- Full-all	
How it works	- Non-Skilled Welder	- Limited future supply and demand due to skilled welders, aging population, and high wages
Domestic and foreign competitors	- There are many overseas prophets, but the introduction cost is high - No domestic competitors	- Productivity improvement over 3 times compared to manual welding
Current sales status	- Samsung ENG Overseas Corporation, Domestic Oil Refining/Petrochemical Plant	- Shipbuilding & EPC at home and abroad
Application performance	- Hyundai Engineering & Construction Saudi Arabia, Venezuela site - Samsung Malaysia, Kuwait site - Hyundai ENG Turkmenistan, Kuwait sites	- Performance of 10 overseas construction cases - Domestic construction is in operation for application from 2020
Our product features	- Welding work by 3~4 days training even for unskilled welders - Operate more than two equipment per person by configuring a remote control system	



Core technology status

# TECHNOLOGY RETENTION

Securing homogeneous welding quality, high productivity (3-4 times compared to manual operation), labor cost reduction, stability improvement and noise and dust reduction, productivity improvement and economical construction

## ORBITAL GMAW



Item	Contents	Note
Main use	- Full-all	- Unlike orbital FCAW, automatic welding is performed from the first floor
How it works	- Non-Skilled Welder	- Limited future supply and demand due to skilled welders, aging population, and high wages
Domestic and foreign competitors	- There is no equipment that automatically welds from the first floor even for advanced overseas students - No domestic competitors	- Productivity improvement over 5 times compared to manual welding
Application performance	- There is no current application performance, but it is expected to operate from 2024	- Newly developed products
Our product features	- Welding work by 3~4 days training even for unskilled welders - Operate more than two equipment per person by configuring a remote control system	

## MULTI WIRE GMAW



Item	Contents	Note
Main use	- Steel/Non-steel Pipe full-position automatic welding	- Application of automatic welding from the first floor
How it works	- Welding work by skilled manual welders	- Limited future supply and demand due to skilled welders, aging population, and high wages
Domestic and foreign competitors	- Even advanced overseas companies do not have the same equipment as our technology - No domestic competitors	
Sales Status	- Completion of Samsung Electronics Semiconductor Site Technique Use Approval	- Newly developed products
Our product features	- Automatic welding from the first floor - Maximize productivity by feeding up to 4 wires - Operate more than two equipment per person by configuring a remote control system - Applicable to all pipe materials with a diameter of 4" or more	- Improved productivity by more than 7 times compared to conventional manual welding



Core technology status

# TECHNOLOGY RETENTION

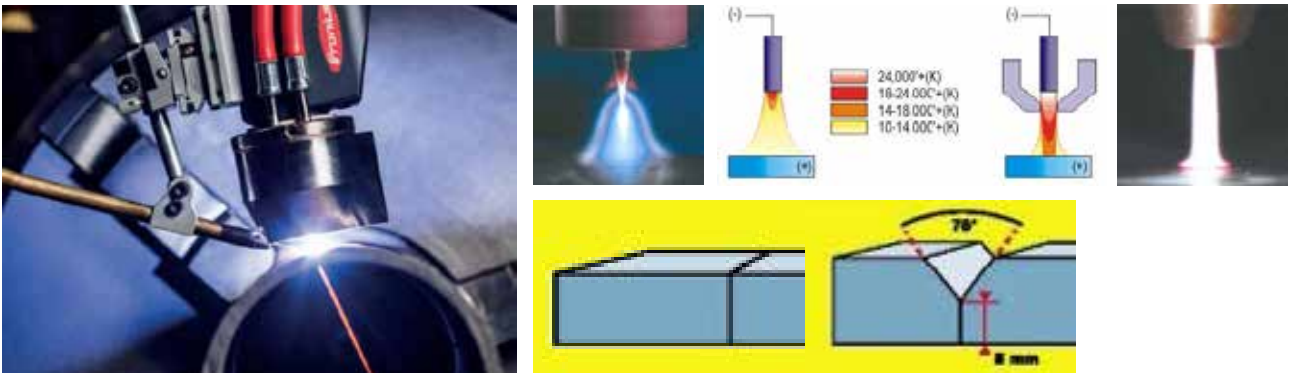
Securing homogeneous welding quality, high productivity (3-4 times compared to manual operation), labor cost reduction, stability improvement and noise and dust reduction, productivity improvement and economical construction

## ROBOT GMAW



Item	Contents	Note
Main use	- Full-1G	- Application of automatic welding from the Root pass floor
How it works	- All GMAW - Welding by non-skilled werder	- Limited future supply and demand due to skilled welders, aging population, and high wages - Excessive welding amount and thermal deformation
Domestic and foreign competitors	- There are many application cases of advanced overseas companies, but none in Korea - Expensive when introducing foreign products	
Applications	- Scheduled to be applied in the first half of 2020 in the piping field of Industries - Scheduled to be applied to Indonesia Project overseas construction in the second half of 2020	- Newly developed products
Our product features	- Automatic welding from the first pass - remote robot welding - Operate more than two equipment per person by configuring a remote control system - Applicable to all pipe materials with a diameter of 4" or more	- Improved productivity by more than 5 times compared to conventional manual welding

## ARCTIG WELDING



Item	Contents	Note
Main use	- Automatic Welding of Non-steel Pipe/ Plate Welding	- Application of automatic welding from the first pass
How it works	- I Butt Welding by ArcTig	- Limited future supply and demand due to skilled welders, aging population, and high wages - Excessive welding amount and thermal deformation
Domestic and foreign competitors	- Austrian Pronius technology, no domestic competition	
Applications	- Under review for application to the piping field of Heavy industry, Construction company - Introduced to the plant field, expanded application after application to the heavy industry field	- More than 60% reduction compared to existing production cost
Our product features	- C/S : 1Pass Welding up to 8mm - S/S : 1Pass Welding up to 10mm - remote robot welding - Operate more than two equipment per person by configuring a remote control system - Applicable to all pipe materials with a diameter of 4" or more	- Improved productivity by more than 5 times in C/S and 10 times in S/S compared to conventional manual welding - Significant reduction in welding material cost, electricity cost, gas cost, etc. - No welding fume, no spatter, no grinding work required





## Company & Product CERTIFICATES



Patent registration certificate



Company affiliated research institute certificate



Trade Business Unique Number Grant



Root company confirmation



Performance sharing company confirmation



Material parts equipment specialized company confirmation



Excellent company for employee invention compensation



Patent registration certificate



Patent registration certificate



Patent registration certificate

## AFTER SALES SERVICE

**DAWOOL PPT the importance of quality service.**  
**Where ever you are, we will be there.**

After-sales services is considered with utmost importance and priority. Immediate attention is therefore given to all requests for service and spares. Spare parts are delivered in the shortest possible time to any destination required and service engineers are sent out on request to operating sites around the world. We're able to repond within 24 hours anywhere in the wolrd, every day of the year.

